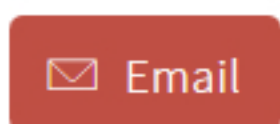
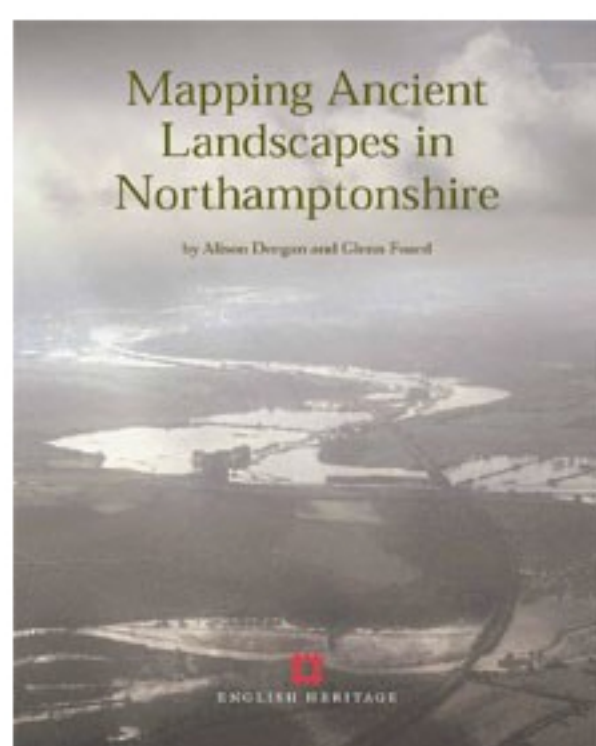


Northamptonshire National Mapping Programme



The Northamptonshire NMP project, which began in 1994, was one of the first to embrace a totally digital methodology. Mapping and recording, which added over 2000 new sites to the county SMR, was completed in 2001.



Mapping Ancient Landscapes in Northamptonshire

Published 15 February 2008

A record of the National Mapping Programme project in Northamptonshire. It recovered and mapped archaeological evidence from field systems, through settlement remains, to funerary monuments, and ranges from the Neolithic to the 20th century.

£50.00

[Learn more](#)

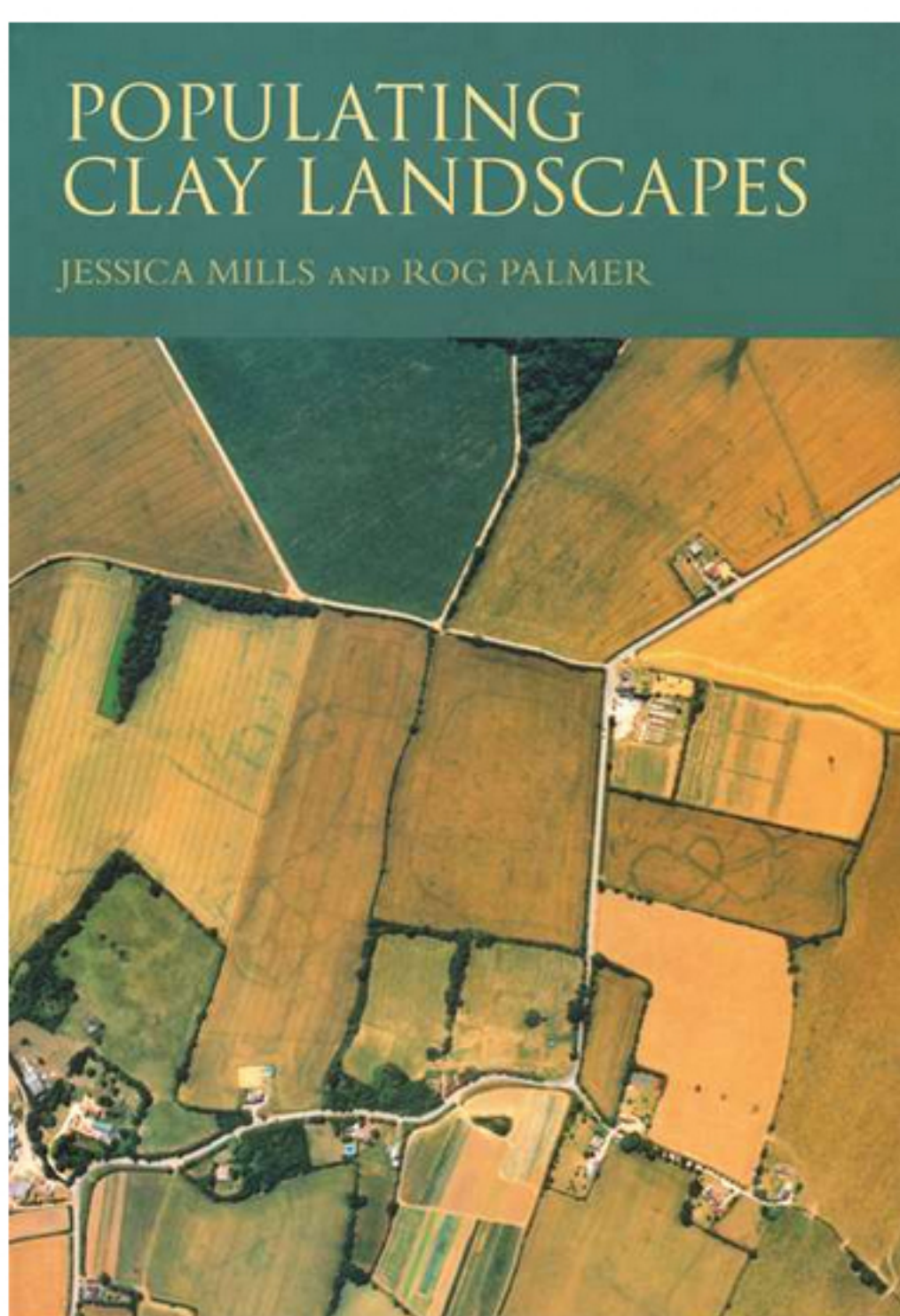
This was followed by a programme of research, analysis and dissemination culminating in the publication of 'Mapping Ancient Landscapes in Northamptonshire' in 2008, by Alison Deegan and Glenn Foard with contributions from Alex Gibson and Graham Cadman.

The project was funded by English Heritage and supported by Northamptonshire County Council (NCC).

Populating clay landscapes

The Northamptonshire NMP project data was also used for a workshop discussion of cropmarks and soilmarks on the clay lands in this county that is now published in Populating Clay Landscapes, edited by Mills and Palmer and published by Tempus.

See specifically "Archaeology on the boulder clay in Northamptonshire: some results from the Northamptonshire National Mapping Programme Project" by Alison Deegan.



Populating Clay Landscapes by Mills, J and Palmer, R. 2007
Tempus

Downloadable results

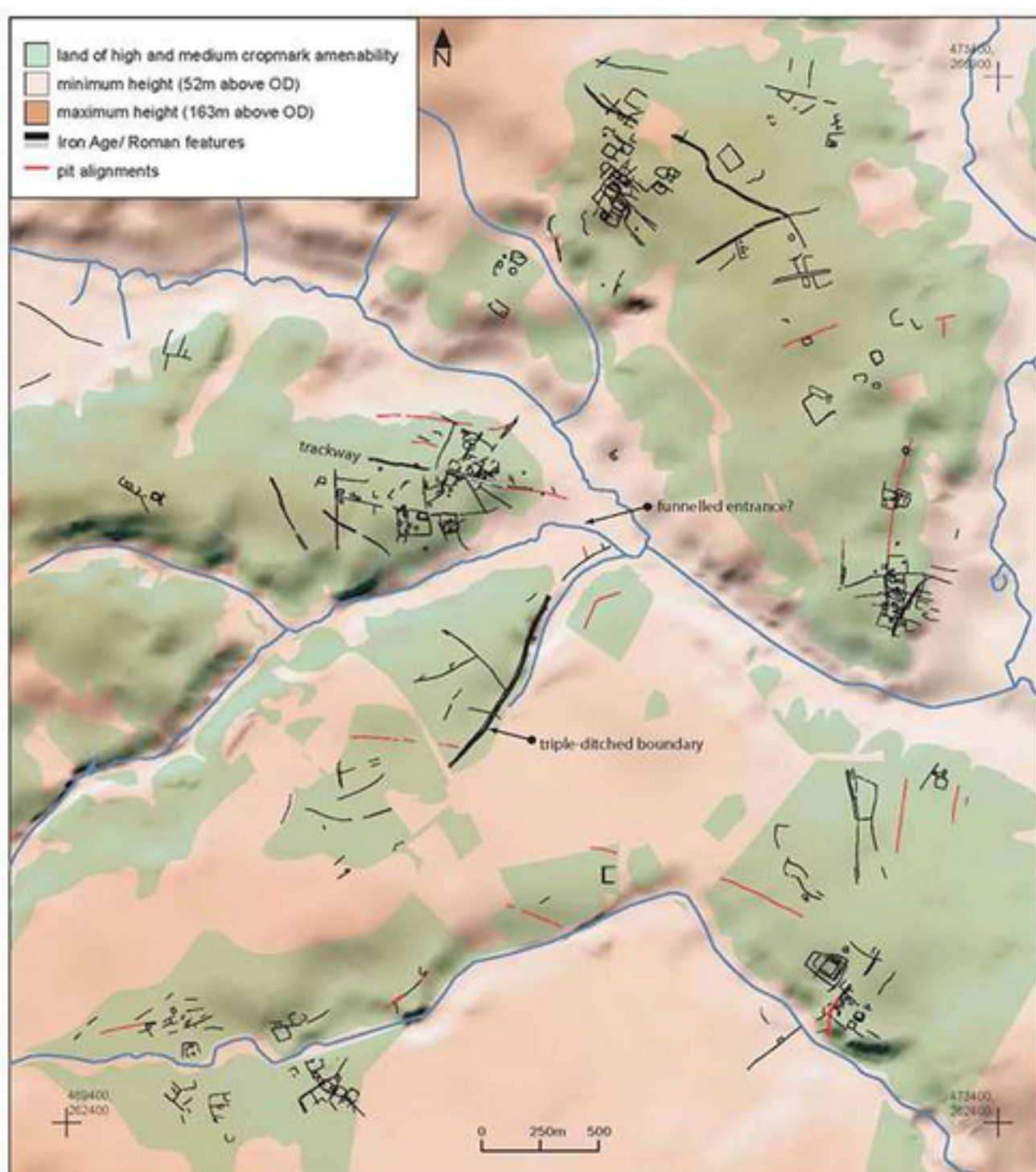
The mapping and recording stage of this project data generated a considerable range and quantity of digital data and much of this is now available via the pages dedicated to the Northamptonshire NMP Project on the ADS website.

On the ADS interactive map users can view all the Northamptonshire NMP mapping and key information from the associated databases.

The interactive map can also display the original transcription files, which indicate the photographic source of an individual feature and a distribution plot of the air photographs covering the county.

At present the Interactive Map is displayed against 1km and 5km grid lines but there are plans to include base mapping from a service such as Google maps or Multimap in the future.

These data, including over 450 NCC air photographs, are also available for download. This will enable to the user to manipulate and display the spatial data in their own GIS and to interrogate the wealth of morphological and interpretative information that lies behind this mapping.



Reproduction of Fig 6.4 from the project monograph, presenting an overview of the ancient landscapes at Harlestone, Church Brampton and Chapel Brampton.