



Why was a new railway station opened in 1877?

Comparing History

Old photographs can tell us a lot about how an area has changed over a period of time.

Look closely at each of the photos in the pack. After matching up the images in pairs, consider which things you can spot that have changed or stayed the same.

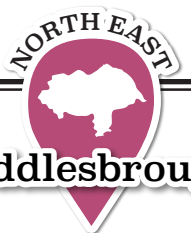
To help you, try looking at key structures such as buildings or statues, vehicles and roads and the way people appear in each photo.

Same	Different





Why was a new railway station opened in 1877?



Middlesbrough



Teacher's Pet

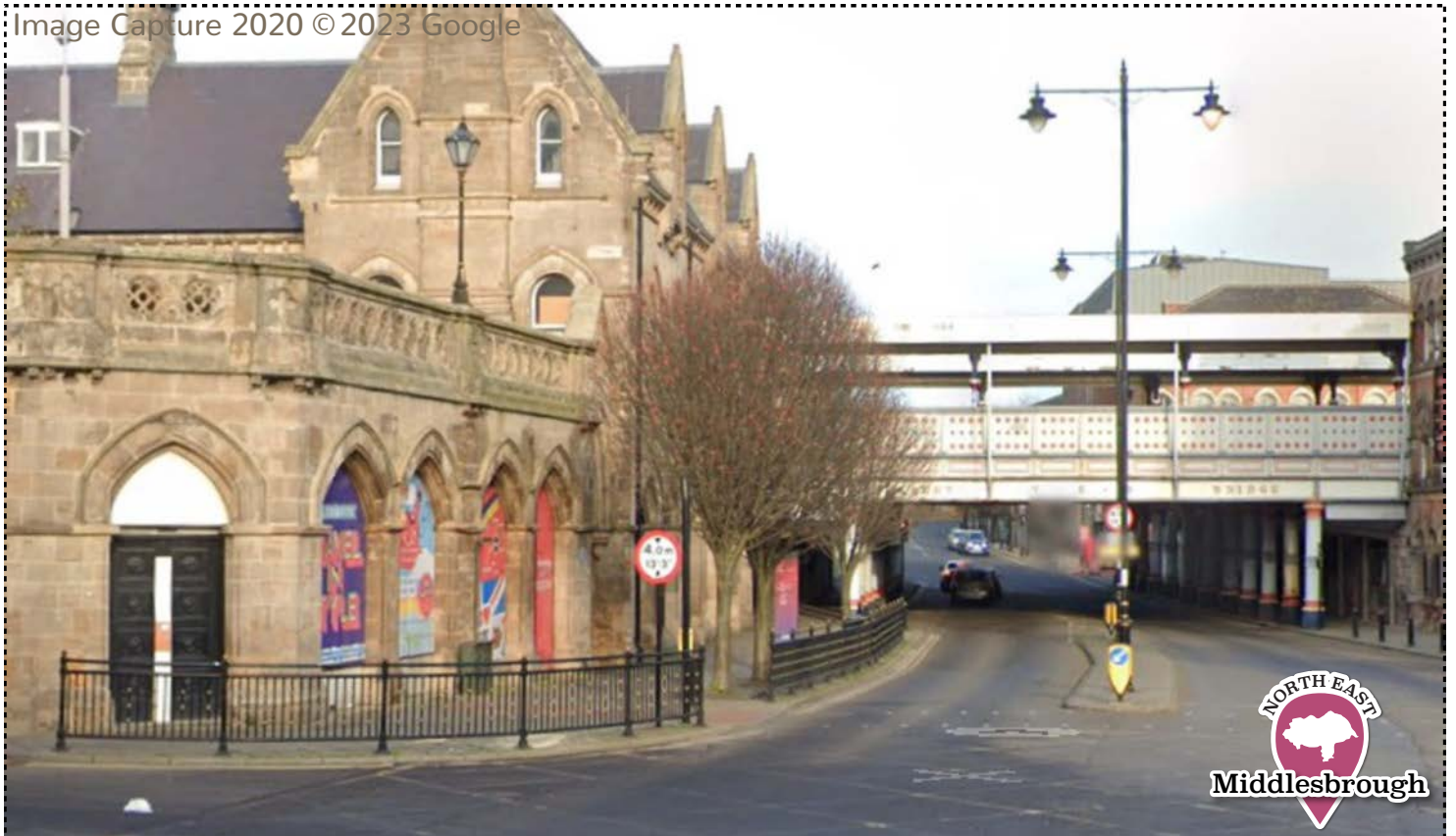


Historic England





Image Capture 2020 © 2023 Google







Why was a new railway station opened in 1877?

Comparing History

Old photographs can tell us a lot about how an area has changed over a period of time.

Look closely at each of the photos in the pack. After matching up the images in pairs, consider which things you can spot that have changed or stayed the same.

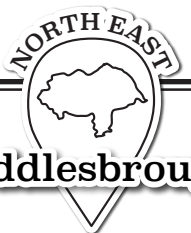
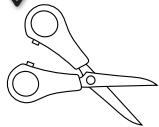
To help you, try looking at key structures such as buildings or statues, vehicles and roads and the way people appear in each photo.

Same	Different

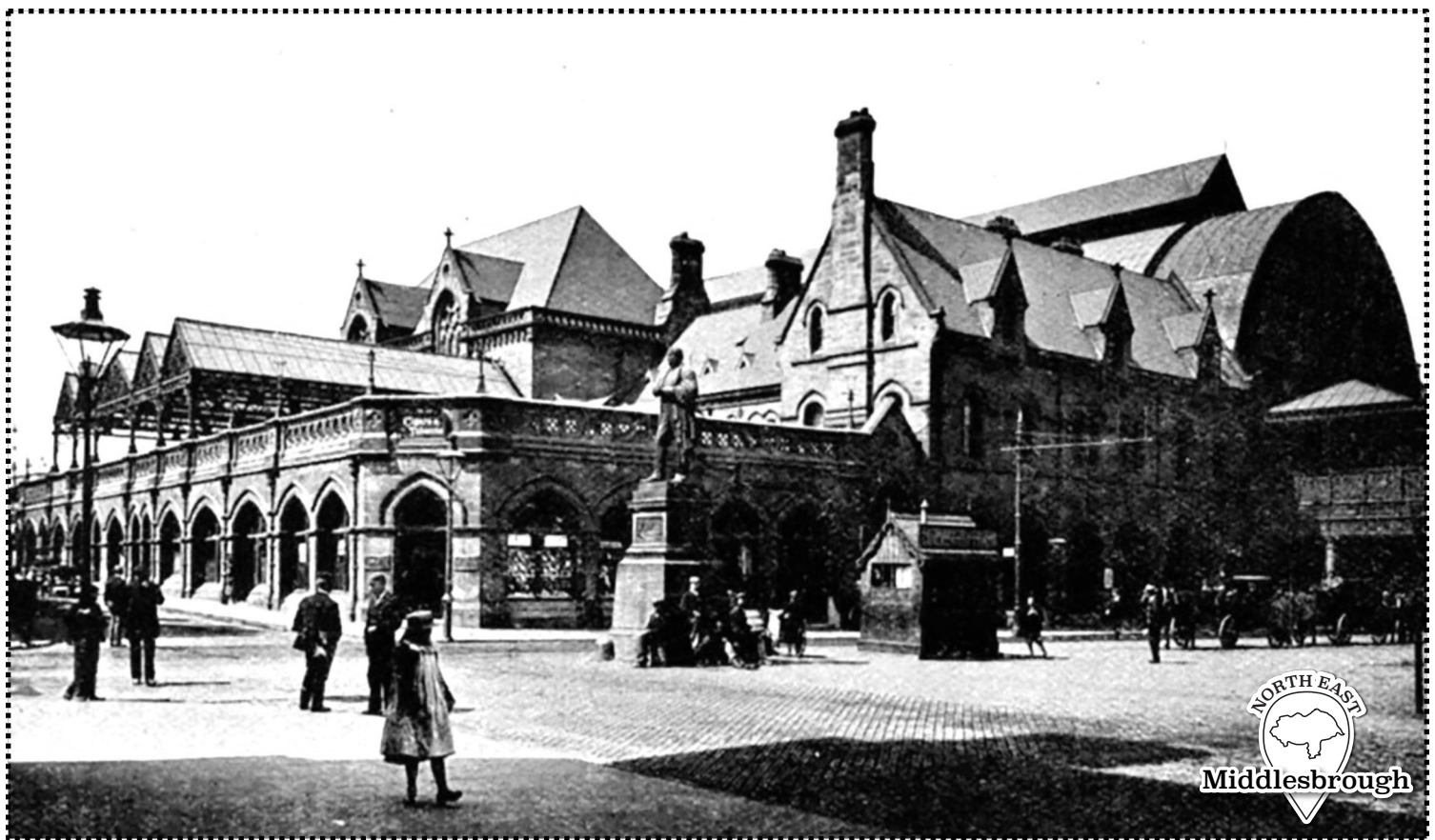




Why was a new railway station opened in 1877?



Middlesbrough



Teacher's Pet



Historic England



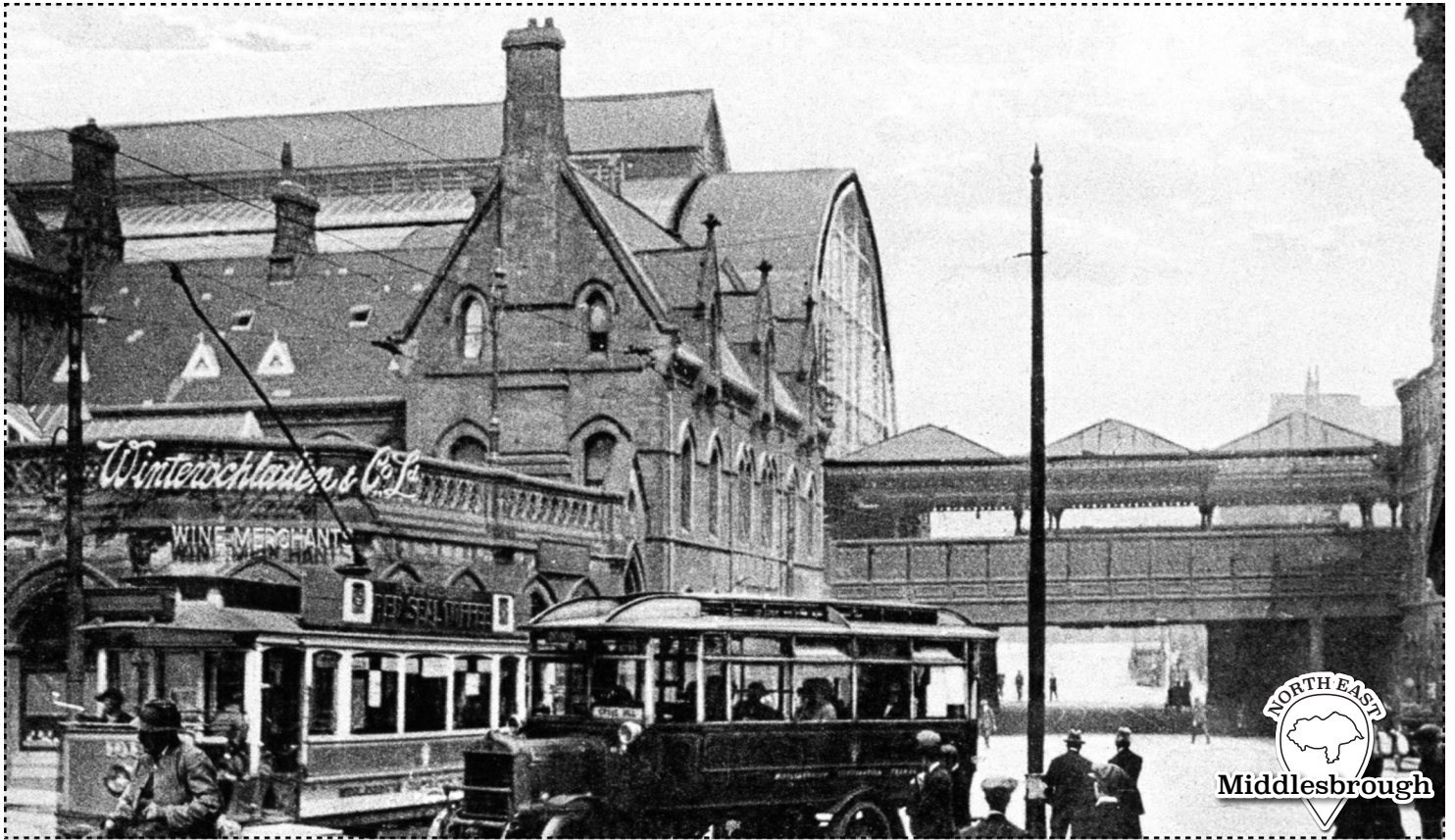
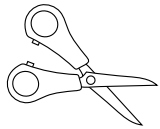
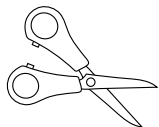


Image Capture 2020 © 2023 Google





Local History

Historic England and Teacher's Pet have come together to bring you a collection of free resources that you can use in your local history teaching.



Historic England



Teacher's Pet

Who are Teacher's Pet?

Teacher's Pet have been providing downloadable and playable educational content to early years and primary school teachers for over 14 years. We cover all areas of the curriculum and use a team of in-house teachers and designers to create engaging and memorable concepts, that the children will love.

Why local history?

At [Teacher's Pet](#) we want to empower primary school teachers by giving them the tools they need to deliver inspiring and thoughtful lessons about the local area and its history. We believe local history teaching has such an important part to play in a child's wellbeing – helping to give children a sense of pride in where they live.

Our Local History project is designed to provide teachers across the UK with everything they need to successfully carry out a full scheme of teaching about their local area, through key enquiry questions and source led activities.

Working with [Historic England](#) gives us access to archived maps and photos for resources and information from knowledgeable local historians, as well helping us to provide the content to you free of charge.

For more information about our Local History project or to find out more about Teacher's Pet Classroom Resources, please visit our website.